

# **Zoom Boom** *by* **CareLift**<sup>®</sup>



## **ZB20044**

- 20,000 lb. capacity
- 44 ft. lifting height

**SUPERIOR TOOL CARRIER**

# ZOOM BOOM Model ZB20044

## DIMENSIONS

Wheelbase .....	138"	350 cm
Overall width.....	102"	259 cm
Overall height .....	108"	274 cm
Length less forks .....	243"	617 cm
Ground clearance .....	18"	46 cm
Total weight (approx.).....	45,000 lb	20,000 kg
Turn radius .....	220"	559 cm
Frame level .....	+/-8 Degrees	

## SPECIFICATIONS

Engine.....	Cummins Tier 3 QSB4.5C turbocharged and charge-air-cooled diesel, 160 horsepower @ 2500 rpm
Transmission.....	Powershift, 3 speed forward and 3 speed reverse Top speed - 20.5 mph 33 km/hr
Axles .....	Axletech (Rockwell) steerable outboard planetary
Brakes.....	Dry disc brakes on all four wheels Parking - pinion mounted dry disc on front axle
Tire .....	17.5 x 25 - 16 ply rock lug grader tubeless
Steering.....	2 wheel, 4 wheel, crab
Boom.....	3 section, welded construction Maximum lift height - 44' 10" - 1366 cm Maximum forward reach - 27' 5" - 838 cm Dual shaft type carriage Carriage rollback - 19 degrees Carriage forward tilt - 80 degrees
Forks.....	2¾" x 6" x 60" 6 cm x 20 cm x 122 cm
General .....	Fuel/hydraulic oil tank - 55 US gal - 212L Dual load sensing piston type Hydraulic pump - 64 gpm @ governed rpm 12 volt - 105 amp. alternator

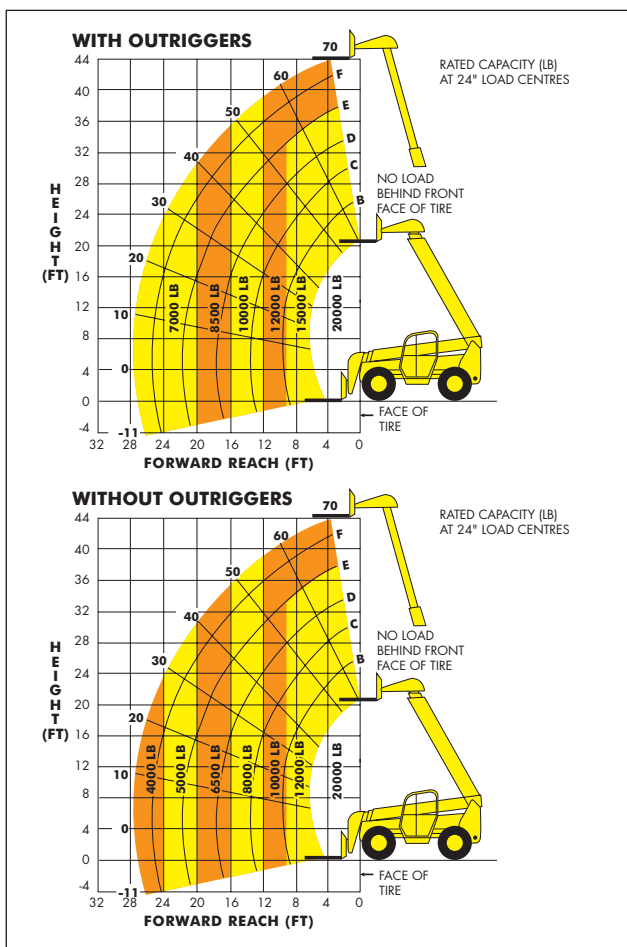
## STANDARD EQUIPMENT

- Pilot-operated joystick boom & frame level controls
- Gauge instrumentation
- Hydraulic frame leveling
- Enclosed lockable engine cowl
- Load capacity chart
- Automatic self-leveling forks
- 4 wheel drive
- Engine block heater
- Quick disconnect carriage
- ROPS/FOPS operator compartment
- Lockable fuel cap and engine compartment
- Service and park brake activated transmission disconnect
- Anti restart keyed ignition switch with neutral start
- Rear axle "stable lock" cylinder
- Adjustable seat
- Right-hand arm rest
- Dual batteries
- Anti freeze
- Retractable seat belt
- Load backrest
- Central frame tilt lubrication
- Electric horn
- Checker plate deck covers and anti-skid floor and steps
- Yellow paint with black trim
- Overcentre lock valves on all hydraulic functions
- Foot throttle
- External rear view mirrors
- Two stage air cleaner
- 4 wheel power steering
- Automatically activated S.A.H.R. parking brake
- Return line hydraulic oil filter
- Hydraulic tank pickup sump strainer
- Muffler guard
- Outriggers

## OPTIONAL EQUIPMENT

- Various carriages/fork sizes
- Turn signals/lights
- Working lights
- Flashing beacon
- Auxiliary hydraulics
- Enclosed operator cab
- Air conditioning
- Fork positioner
- Sideshift carriage
- Material bucket
- 15,000 lb winch
- Foam filled tires
- Fenders
- Coil ram
- Pipe and pole grapple
- Pipe and pole clamp
- Other specialized attachments
- Mine code specification

## CAPACITY CHARTS



- Machine design complies with ASME/ANSI B56.6 stability requirements for rough terrain forklifts.
- For attachments consult factory for load rating.
- Read boom angle and boom extension, then determine allowable load from chart.
- Figures shown are stacking capacity with truck level on a firm surface and with properly inflated tires.
- Do not exceed rated loads as dangerous and unstable machine conditions will result.

## IMPORTANT

- All capacities rated on firm ground, with the machine steered straight and frame level.
- Always travel with boom retracted in the lowest possible position.
- Never position fork carriage behind front face of tire.

**Note:** Materials and specifications are subject to change without notice.

**ZOOM BOOM**  
by CareLift®

*Extending ourselves for you.*

CareLift Equipment Limited  
5111 Fountain St. N., P.O. Box 250 Breslau, Ontario N0B 1M0  
Tel: (519) 648-2282 • Toll Free: 1-800-870-0441  
Fax: (519) 648-3434 • Website: [www.carelift.com](http://www.carelift.com)  
email: [info@carelift.com](mailto:info@carelift.com)

C148 02/07 2M