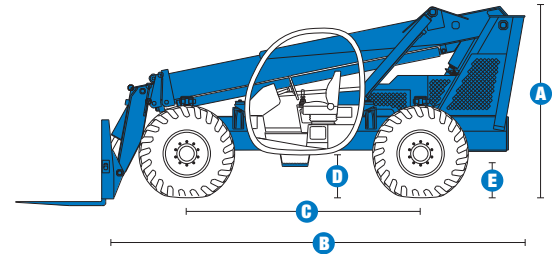


Specifications

MODEL		GTH™-844	
MEASUREMENTS		US	Metric
Maximum lift height		44 ft	13.41 m
Reach		27 ft	8.23 m
Reach at maximum height		3 ft 6 in	1.07 m
A Height, stowed		8 ft 11 in	2.72 m
B Length, stowed (without forks)		20 ft	6.10 m
Width		8 ft 6 in	2.59 m
C Wheelbase		10 ft 10 in	3.30 m
D Ground clearance, center		1 ft 5 in	0.43 m
E Ground clearance, axle		1 ft 5 in	0.43 m
Fork cross section		2 x 4 in	51 x 101 mm



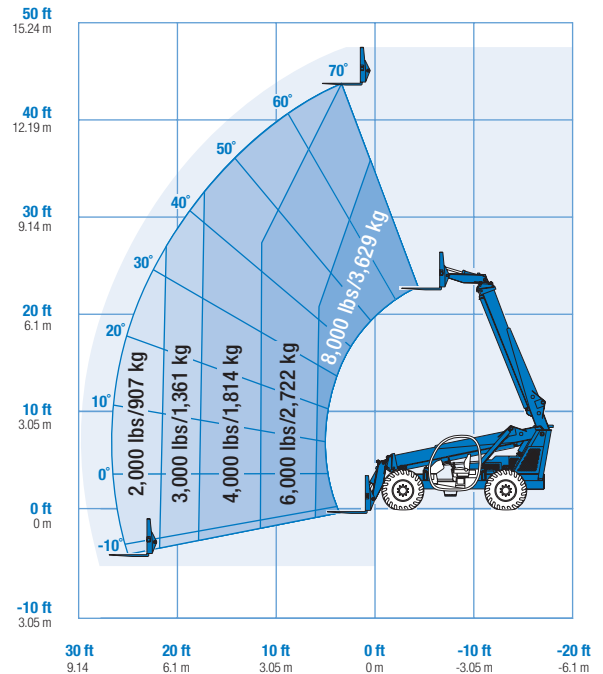
PRODUCTIVITY		
Maximum lift capacity	8,000 lbs	3,629 kg
Lift capacity at maximum height	6,000 lbs	2,722 kg
Lift capacity at maximum reach	2,000 lbs	907 kg
Drive speed	17 mph	27.4 km/h
Boom up/down	15/11 seconds	15/11 seconds
Boom extend/retract	18/14 seconds	18/14 seconds
Draw bar pull	19,200 lbs	8,709 kg
Turning radius, outside (4WS)	14 ft 9 in	4.50 m
Auxiliary hydraulic flow	3-7 gpm	11-26 lpm
Auxiliary hydraulic pressure	3,000 psi	207 bar
Tires, standard size	13 x 24 in, 12 ply	

POWER		
Power source	John Deere 4045TF270 4 cylinder 99 hp Tier II turbo-charged diesel Deutz BF 4 2012 100 hp (74.6 kW) Tier II turbo-charged diesel Perkins 1104C-44T Tier II turbo-charged diesel 99 hp (73.8 kW)	
Hydraulic tank capacity	34 gal	129 L
Hydraulic system capacity (w/tank)	50 gal	189 L
Fuel tank capacity	30 gal	114 L

WEIGHT		
Weight*	22,500 lbs	10,206 kg

STANDARDS COMPLIANCE ASME B 56.6, ISO 3471, ISO 3449

LOAD CHART GTH™-844**



* Weight will vary depending on options and/or country standards.
** Load ratings vary depending on attachment.

Features

STANDARD FEATURES

MEASUREMENTS

- 8,000 lb (3,629 kg) maximum lift capacity
- 44 ft (13.41 m) maximum lift height
- 27 ft (8.23 m) maximum reach

PRODUCTIVITY

- Full time planetary 4-wheel drive
- 4WS
- Operator selectable front, crab, coordinated steering modes
- 3-speed forward and reverse powershift transmission
- Frame leveling 10° side to side
- Power assisted steering
- Internal multiple wet disc brakes
- Spring applied, hydraulic release emergency parking brake with transmission declutch
- 13 x 24 in 12-ply calcium chloride filled tires
- Front axle differential lock
- Rear axle lock-up
- High efficiency/variable displacement hydraulic pump
- ROPS/FOPS canopy (ISO compliant)
- Multi-function joystick controller
- Fully hydraulic proportional boom and frame level controls
- Rear window
- Machine level indicator
- Full instrumentation
- 48 in carriage (pin on)
- 48 in pallet forks
- Boom angle indicator
- 10 micron hydraulic return filter with bypass indicator
- 1,000 cold cranking amps at 0° F (-17° C)

OPTIONS & ACCESSORIES

PRODUCTIVITY

- Fully enclosed cab (includes full glass, defroster, wiper, right-side sliding window, split door, washer)
- Fully enclosed cab with air conditioning
- Right-side sliding window
- Glass over skylight bars
- Front window
- Front screen
- Right-side screen
- Adjustable suspension seat
- Dual joystick controls
- Flashing beacon
- Work lights (2 cab mounted front, 1 back-up, 2 stop/tail)
- Road lights (2 cab mounted front, 1 back-up, 2 rear stop/turn/tail, 2 front turn)
- Auxiliary hydraulic circuit
- Fenders (set of 4)
- Mounted disposable fire extinguisher
- Manual quick attach
- Retractable 3 in (8 cm) seatbelt

ATTACHMENT OPTIONS

- Carriages
 - 60 in (1.52 m) swing carriage (45° from center left and right)
 - 72 in (1.83 m) swing carriage (45° from center left and right)
 - 60 in (1.52 m) wide carriage
 - 72 in (1.83 m) wide carriage
 - 48 in (1.22 m) rotating carriage (10° from center left and right)
 - 60 in (1.52 m) rotating carriage (10° from center left and right)
 - 72 in (1.83 m) rotating carriage (10° from center left and right)



- Forks (in addition to standard 48 in pallet forks)
 - 60 in (1.52 m) pallet forks (set of two) 2 x 4 x 60 in (.05 x .10 x 1.52 m)
 - 72 in (1.83 m) pallet forks (set of two) 2 x 4 x 72 in (.05 x .10 x 1.83 m)
 - 60 in (1.52 m) full taper forks (set of two) 2.25 x 5 x 60 in (.06 x .13 x 1.52 m)
 - 60 in (1.52 m) lumber forks (set of two) 1.75 x 7 x 60 in (.04 x .18 x 1.52 m)
 - Cubing tines (set of 4)
- Bucket
 - Light duty rubbish bucket – 1yd³ (.76m³)
- 14 ft (4.27 m) truss boom

ENGINE OPTIONS

- Deutz 100 hp Tier II turbo-charged diesel engine
- John Deere 99 hp Tier II turbo-charged diesel engine
- Perkins 99 hp Tier II turbo-charged diesel engine
- Intake air heater and block heater (Deutz engine)
- Electric cold start (Deutz engine)
- Electric ether aid (John Deere engine)
- Electric block heater (John Deere engine)
- Electric block heater (Perkins engine)

TIRE OPTIONS

- 13 x 24 in 12-ply foam-filled rough terrain tires
- 13 x 24 in 12-ply foam-filled rock lug tires
- 13 x 24 in 12-ply air-filled rough terrain tires
- 13 x 24 in 12-ply calcium chloride filled rock lug tires
- 13 x 24 in solid rough terrain tires

Genie United States

18340 NE 76th Street
P.O. Box 97030
Redmond, Washington 98073-9730

Telephone **+1 (425) 881-1800**
Toll Free in USA/Canada **+1 (800)-536-1800**
Fax +1 (425) 883-3475

Genie Europe

Millennium House
Brunel Drive
Newark NG24 2DE
UK

Telephone **+44 (0)1476 584333**
Fax +44 (0)1476 584334

Email: infoeurope@genieind.com

Distributed By:

Effective Date: January, 2008. Product specifications and prices are subject to change without notice or obligation. The photographs and/or drawings in this document are for illustrative purposes only. Refer to the appropriate Operator's Manual for instructions on the proper use of this equipment. Failure to follow the appropriate Operator's Manual when using our equipment or to otherwise act irresponsibly may result in serious injury or death. The only warranty applicable to our equipment is the standard written warranty applicable to the particular product and sale and we make no other warranty, express or implied. Products and services listed may be trademarks, service marks or trade-names of Terex Corporation, Genie Industries, Inc. and/or their subsidiaries in the U.S.A. and many other countries and all rights are reserved. Terex® is a Registered Trademark of Terex Corporation in the U.S.A. and many other countries. Genie® is a Registered Trademark of Genie Industries, Inc. in the U.S.A. and many other countries. Genie is a Terex Company. © 2008 Terex Corporation.